

**Mexican Monsoon Time Scale  
(Basics of the Mexican Monsoon Time Scale)**

Gangadhara Rao Irlapati

H.No.5-30-4/1, Saibaba Nagar, Jeedimetla, Hyderabad, Telanagana State, India-500055.

Email:- [scientistgangadhar@gmail.com](mailto:scientistgangadhar@gmail.com)

**Abstract:** The Mexican Monsoon is a significant feature in the climate of Southwestern United States and Mexico during the summer months. Rainfall in the Northwestern Mexico during the months of July through September accounts for 60% to 80% of the total annual rainfall, while rainfall in Arizona for these same months accounts for over 40% of the total annual rainfall. Deep convection during the Monsoon season produces frequent damaging surface winds, flash flooding and hail and is difficult forecast problem.

[Gangadhara Rao Irlapati. **Mexican Monsoon Time Scale** (Basics of the Mexican Monsoon Time Scale). *Academ Arena* 2016;8(5s): 93-115]. (ISSN 1553-992X). <http://www.sciencepub.net/academia>. 5. doi:[10.7537/marsaaj0805s1605](https://doi.org/10.7537/marsaaj0805s1605).

**Key Words:** Mexican Monsoon, Indian monsoon Time Scale, Chronological sequence, Main path of the Indian Monsoon, Astrogeophysical/Astrometeorological Phenomena.

**Introduction:**

The Mexican Monsoon Time Scale is a Chronological sequence of events arranged in between time and weather with the help of a scale for studying the past, present and future movements of the Mexican Monsoon and its relationship with rainfall and other weather problems and Natural calamities.

**Preparation Of The Scale:**

Prepare the Mexican Monsoon Time Scale having 365 horizontal days from March 21<sup>st</sup> to next year March 20<sup>th</sup> (or 1<sup>st</sup> April to next year March 31<sup>st</sup> or according to convenience) for a required period comprising of a large time and weather have been taken and framed into a Square Graphic Scale, or, 2 or 4 parts later the parts may be combined with pasting.

**Data Required For The Scale:**

The main Weather events of the monsoon season if any pertaining to the monsoon region may be taken to formulating the Mexican Monsoon time Scale.

**Performance Of The Scale:**

Prepare the Mexican Monsoon Time Scale having 365 horizontal days from March 21<sup>st</sup> to next year March 20<sup>th</sup> (or 1<sup>st</sup> April to Next Year March 31<sup>st</sup> or according to convince) for a required period comprising of a Large time and weather have been taken and framed into a Square Graphic Scale. The Scale may be prepared either in a single form or, 2 or 4 parts later the parts should be combined with pasting. The main weather events if any pertaining to the monsoon Season of the region have been entering on the Scale as per the date and month of the each and every year. If we have been managing the Mexican

monsoon time Scale in this manner continuously we can study the past, present and future movements of the Mexican Monsoon and its relationship with weather problems and Natural calamities of the monsoon.

**Sample Model Scale:**

For example, I have prepared the monsoon time scale for India by preparing the scale having 365 horizontal days from 1<sup>st</sup> April to next year March 31<sup>st</sup> of 128 years from 1888 to 2016 of the required period comprising of large time and weather have been taken and framed into a square graphic scale. The monsoon pulses in the form of low pressure systems over the Indian region have been entering on the scale in stages by 1 for low, 2 for depression, 3 for storm, 4 for severe storm and 5 for severe storm with core of hurricane winds pertaining to the date and month of the each and every year. If we have been managing the scale in this manner continuously, we can study the past, present's and future's of the India Monsoon and its relationship with rainfall and other weather problems & natural calamities in India.

**Analysis:**

The India Monsoon Time Scale reveals many secrets of the Indian monsoon and its relationship with rainfall & other weather problems and natural calamities. For example, some bands, clusters and paths of low pressure systems along with the main paths of the Indian Monsoon (South-west monsoon and north-east monsoon) clearly seen in the map of the Indian monsoon it have been some cut-edged paths passing through its systematic zigzag cycles in ascending and descending orders which causes heavy

rains & floods in some years and droughts & famines in another years according to their travel. The tracking date of main path & other various paths such as south-west monsoon and north-east monsoon etc., of the Indian Monsoon denotes the onset of the monsoon, monsoon pulses or low pressure systems. And also we can find out many more secrets of the Indian monsoon such as droughts, famines, cyclones, heavy rains, floods, real images of the Indian monsoon, and onset & withdrawals of south west monsoon and north-east monsoon etc. by keen study of the Indian Monsoon Time Scale.

### Measuring Of The Monsoon:

For example, during 1871-1990's, the main path of the Indian Monsoon was rising over June, July, August and creating heavy rains and floods in most years. During 1900-1920's, it was raising over August, September and resulting good rainfall in more years. During 1965-2004's it was falling over September and causing low rainfall and droughts in many years. At present it is rising upwards over June, July, August, September and will be resulting heavy rains & floods in coming years during 2004-2060. The tracking date of main path & other various paths such as south-west monsoon and north-east monsoon etc., of the Indian Monsoon denotes the onset of the monsoon, monsoon pulses or low pressure systems. And also we can find out many more secrets of the Indian monsoon such as droughts, famines, cyclones, heavy rains, floods, real images of the Indian monsoon, and onset & withdrawals of south west monsoon and north-east monsoon etc. by keen study of the Indian Monsoon Time Scale.

### Principle:

This is an Astrogeophysical/Astrometeorological phenomenon of effects of astronomical bodies and forces on the earth's geophysical atmosphere. The cause is unknown however the year to year change of movement of axis of the earth inclined at  $23\frac{1}{2}$  degrees from vertical to its path around the sun does play a significant role in formation of clusters, bands & paths of the Indian Monsoon and stimulates the Indian weather. The inter-tropical convergence zone at the equator follows the movement of the sun and shifts north of the equator merges with the heat low pressure zone created by the rising heat of the sub-continent due to direct and converging rays of the summer sun on the India Sub-Continent and develops into the monsoon trough and maintain monsoon circulation.

### Physical Appearance:

It is came to known in my researches that the Mexican Monsoon has a special physical appearance just as the Indian Monsoon.

### Measures Of The European Monsoon:

It is came to known in my researches that the Mexican Monsoon having some peculiar measures just as identified in the Indian Monsoon.

### Conclusions:

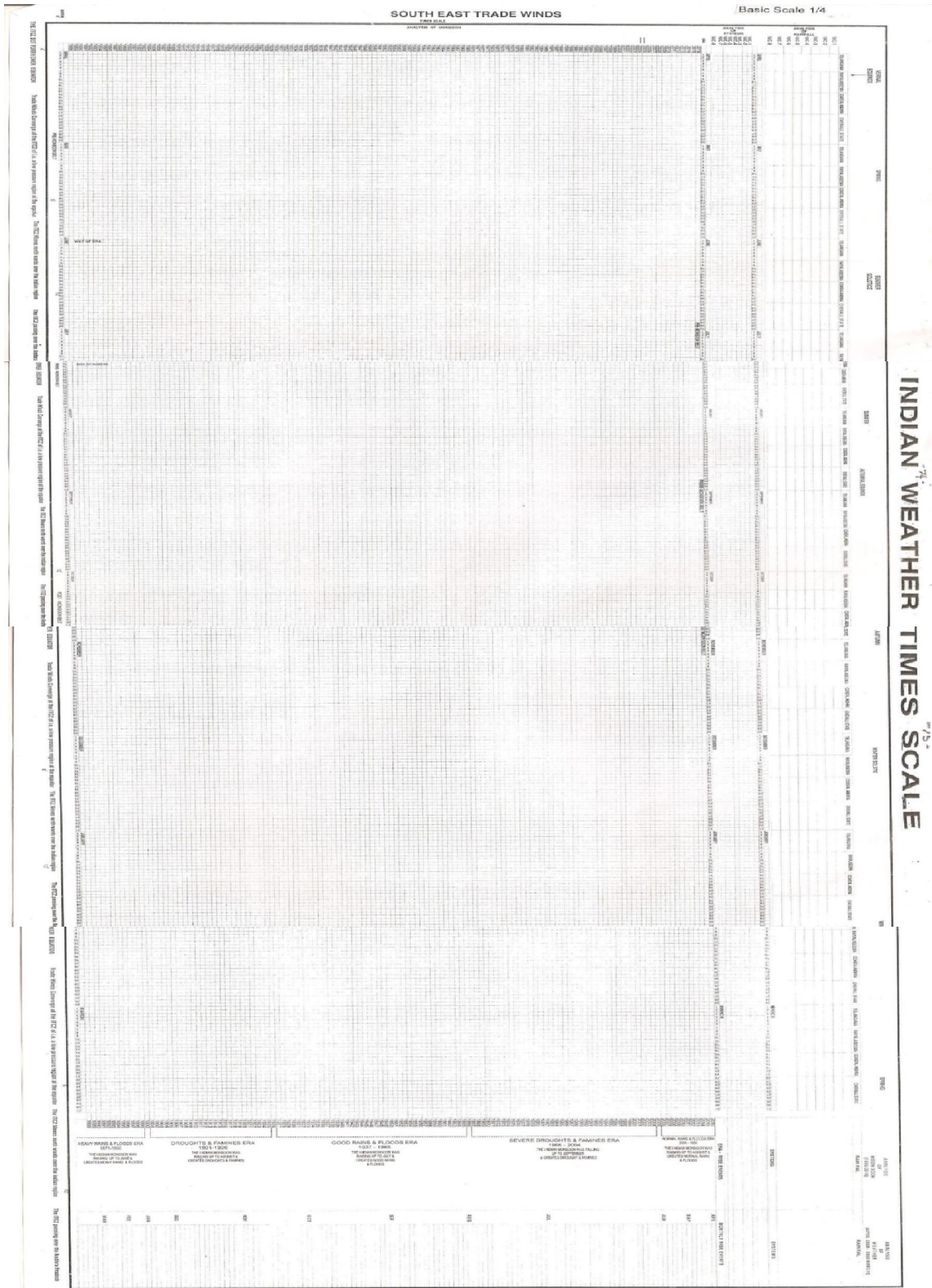
The world Scientist hereby requested to continue further researches on the Mexican Monsoon Time Scale and find out the mysteries of the Mexican Monsoon and we can make many more modifications thus bringing many more developments in the Mexican Monsoon Time Scale.

### References:

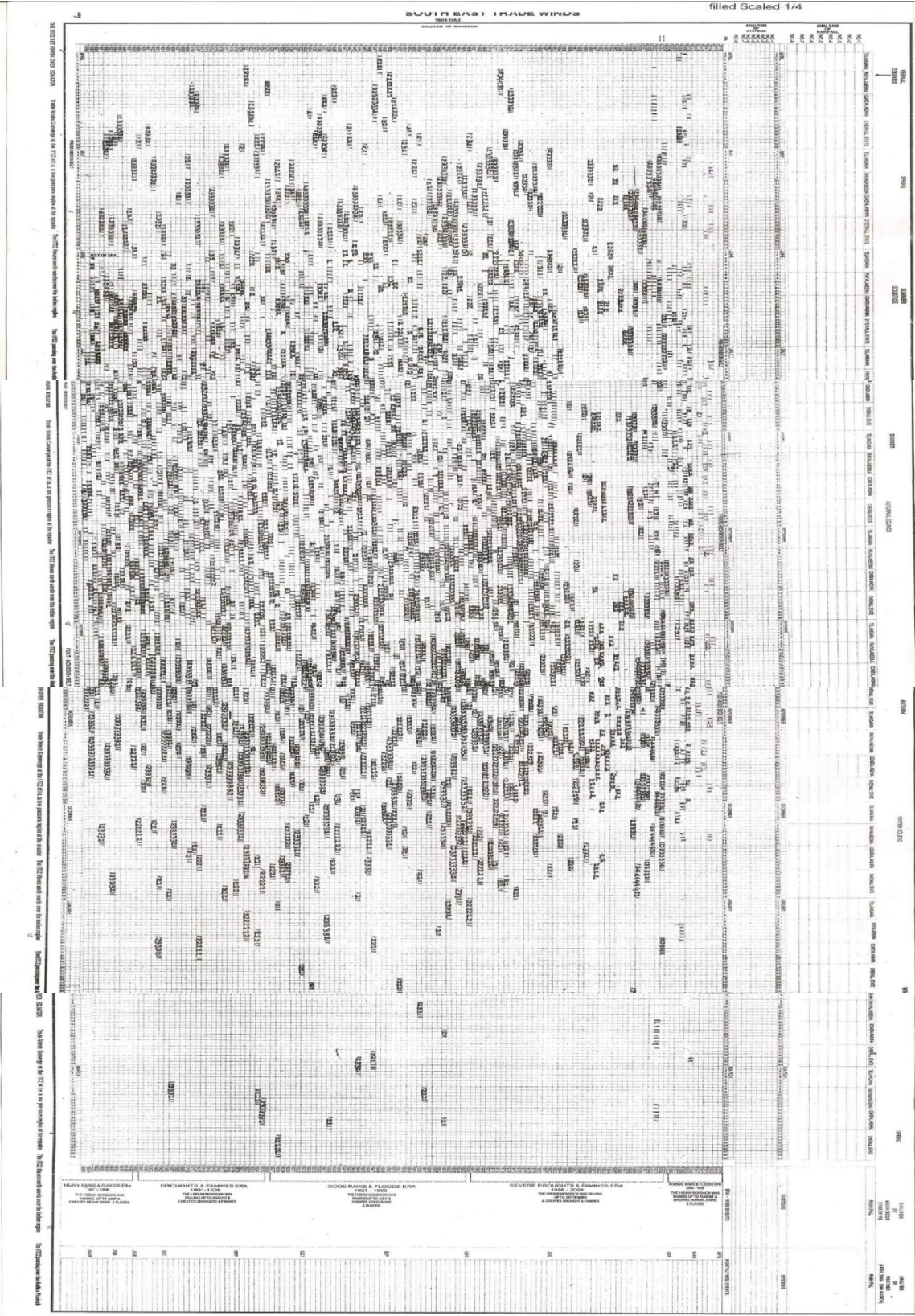
1. Mooley DA. Shukla J(1987); Characteristics of the west ward-moving summer monsoon low pressure systems over the Indian region and their relationship with the monsoon rainfall. Centre for ocean-land atmospheric interactions, university of Maryland, college park, MD.
2. All India monthly and seasonal rainfall series, 1871-1993, B. Parthasarathy, A.A. Munot, D.R. Kothawale, Theoretical and applied climatology, 1994, Springer.
3. Das P.K. and B.L. Bose, 1958, Numerical study of movement of monsoon depression, Ind. journal of meteor. Geophysics.
4. Analysis of variability and trends of extreme rainfall events over India using 104 years of gridded daily rainfall data, M. Rajeevan, J. Bhate, A.K. Jaswal, Geophysical Research letters, 2008, online library.
5. Jadhav, S. K. and A.A. Munot, 2004; statistical study of the low pressure systems during summer monsoon season over the Indian region, mausam, 55,15-30.
6. Clustering of low pressure system during the Indian summer monsoon by intra seasonal oscillations, bn.goswami, rs. ajaya mohan, prince Xavier ,and d. sengupta, centre for atmospheric and oceanic studies, Indian institute of science, bangolour, India.
7. Composite structure of monsoon low pressure system and its relation to Indian rainfall, v. Krishna murthy and rs. Ajaya mohan, 2010, j.climate, 23,4285-4305.
8. Indian monsoon university of st Andrews [www.andrews.ac.uk/dibz/asia/monsoon/html](http://www.andrews.ac.uk/dibz/asia/monsoon/html).
9. Indian monsoon /meteorology/Britannica/.com [www.britanica.com/science /Indian monsoon](http://www.britanica.com/science /Indian monsoon).
10. The global monsoon system: research and fore cast; caos.iisc.in/faculty/bng/iwm-iii-bng-overview.
11. Climate prediction centre-global monsoon; [www.cpc.ncep.noaa.gov, climate. weather](http://www.cpc.ncep.noaa.gov, climate. weather).

12. The global monsoon system, [www.wcrp-climate.org/documents/](http://www.wcrp-climate.org/documents/) monsoon –factsheet.
13. All India monthly and seasonal rainfall series, 1871-1993, b. parthasarathy, a. a mount, Dr. kothawale, theoretical and applied climatology, 1994, Springer.
14. Parthasarathy. b, mount. aa, kothawale. dr, monthly and seasonal rainfall series for all India homogeneous regions and meteorological subdivisions, 1871-1994, research report, iitm Pune.
15. Longest instrumental rainfall series of the Indian regions (1813-2006), Indian institute of tropical meteorology, Pune.
16. All Indian data series-(imd) Pune.
17. Monthly rainfall data series-ministry of earth sciences, moes.gov.in/
18. 114 years rainfall in India-interactive, India environmentportal.org.in/rainfall in India.
19. Education national geography.org/encyclopedia/monsoon.
20. Phoenix about.com/od/weather/a/monsoon trivia/htm.
21. In.wikipedia.org/wiki/monsoon.
22. www.wcpr-climate.org/documents/monsoon facts sheet.
23. The Global Monsoon system: Research and forecast (Report of the India National Committee of third International workshop on Monsoon (IWM-III) 2-6 Nov-2004, Hangzhou, China Report No.70.

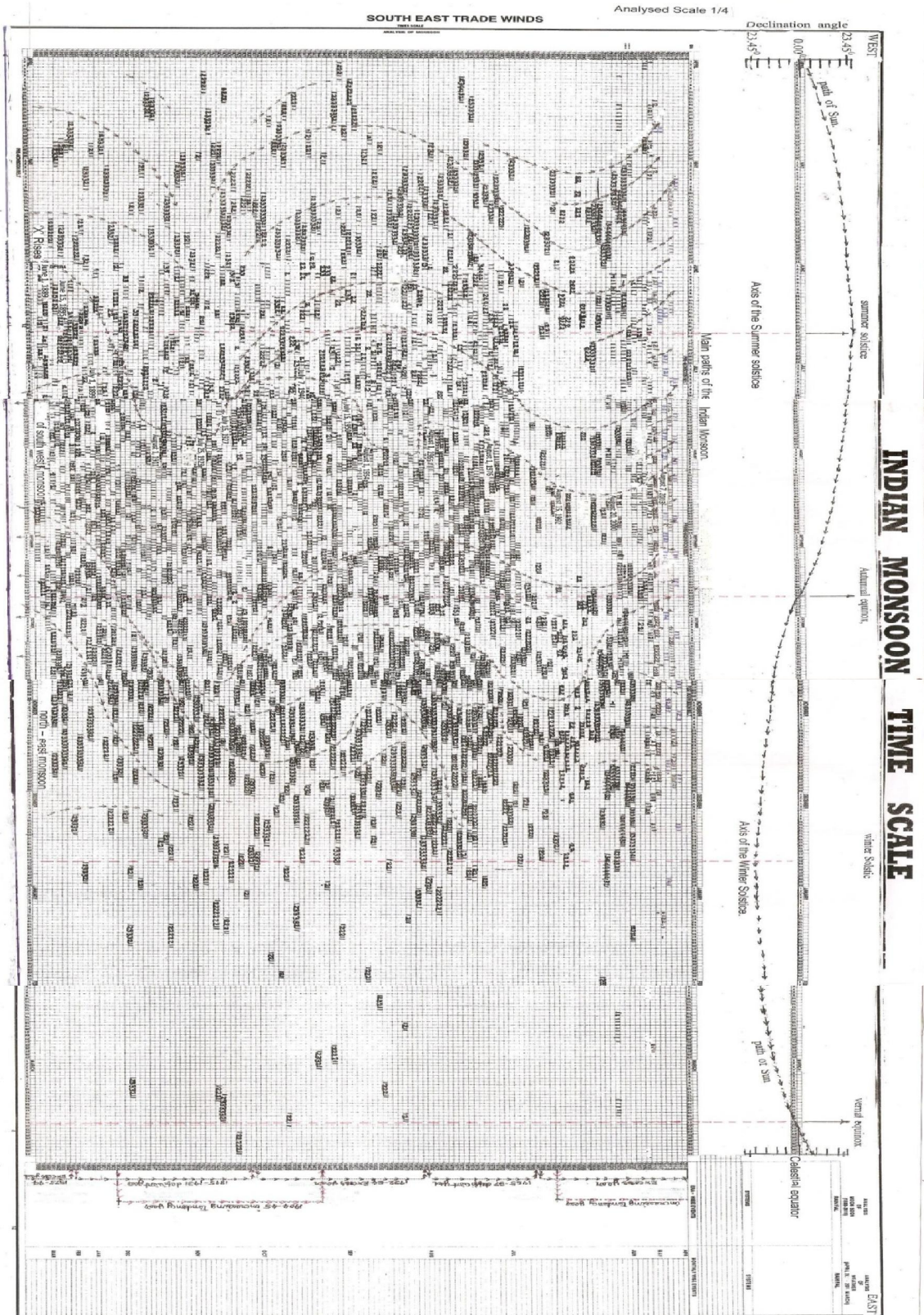
Appendices:









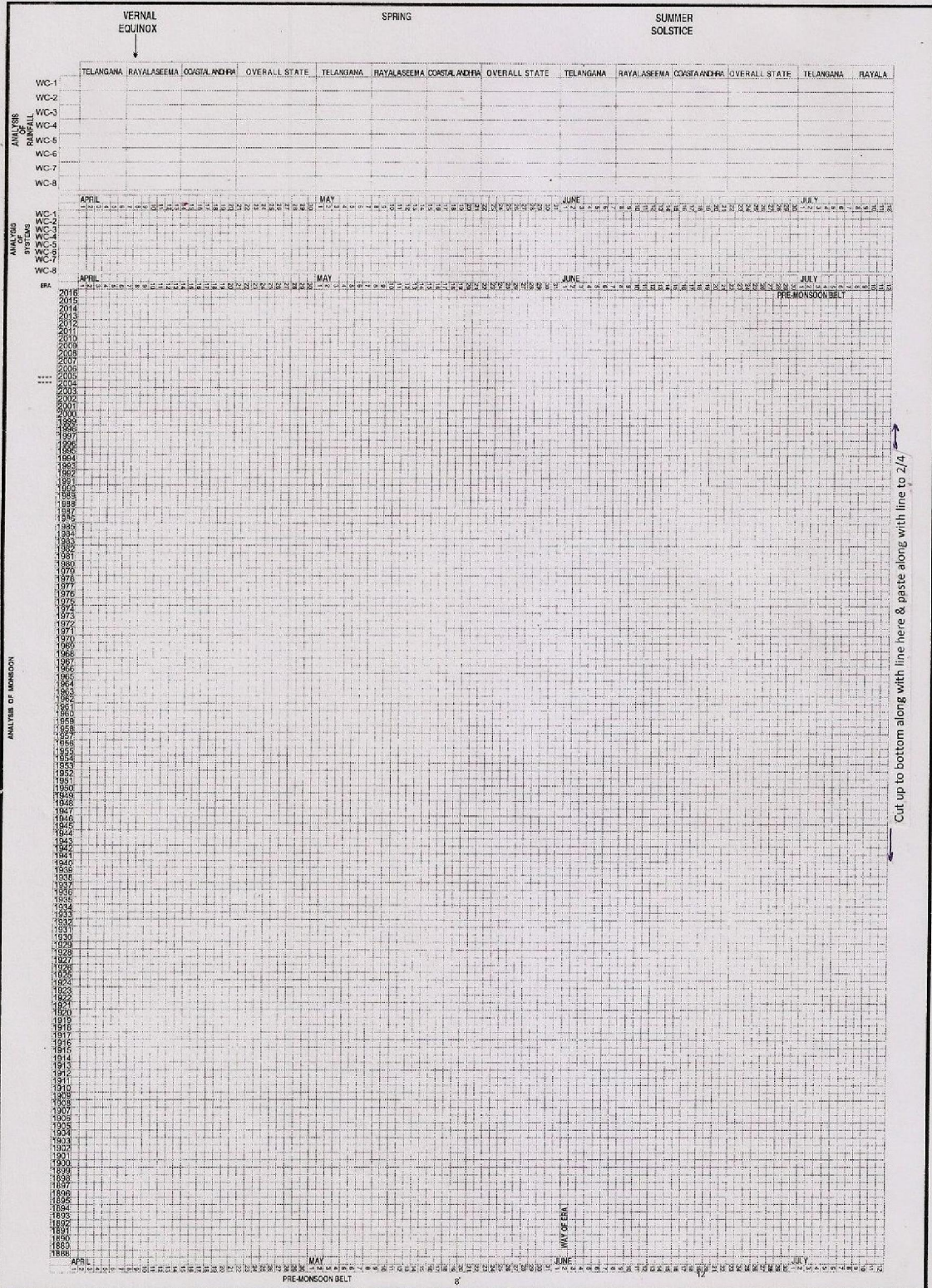




Basic Scale 1/4

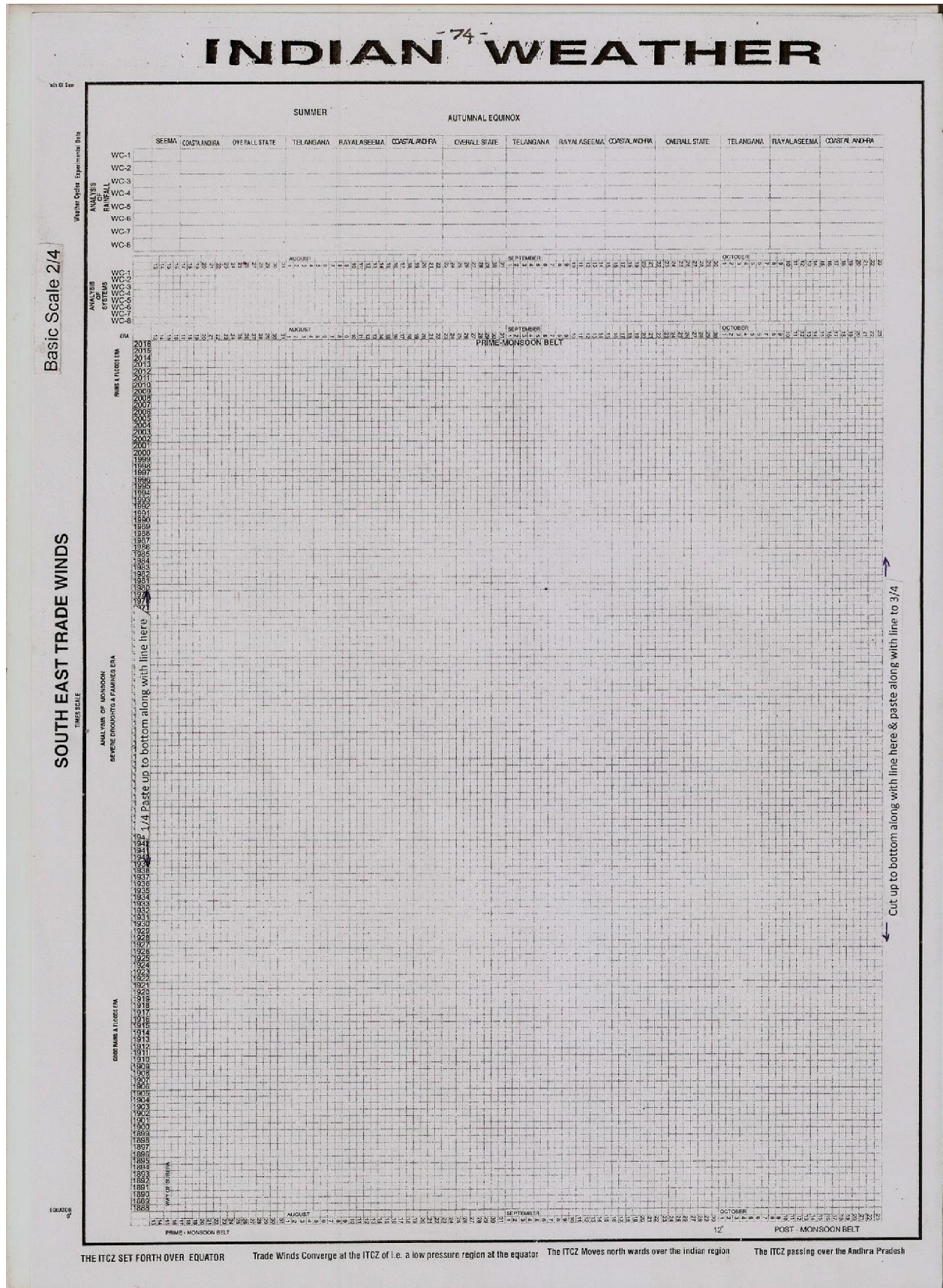
SOUTH EAST TRADE WINDS

THREE SCALE  
ANALYSIS OF MONSOON

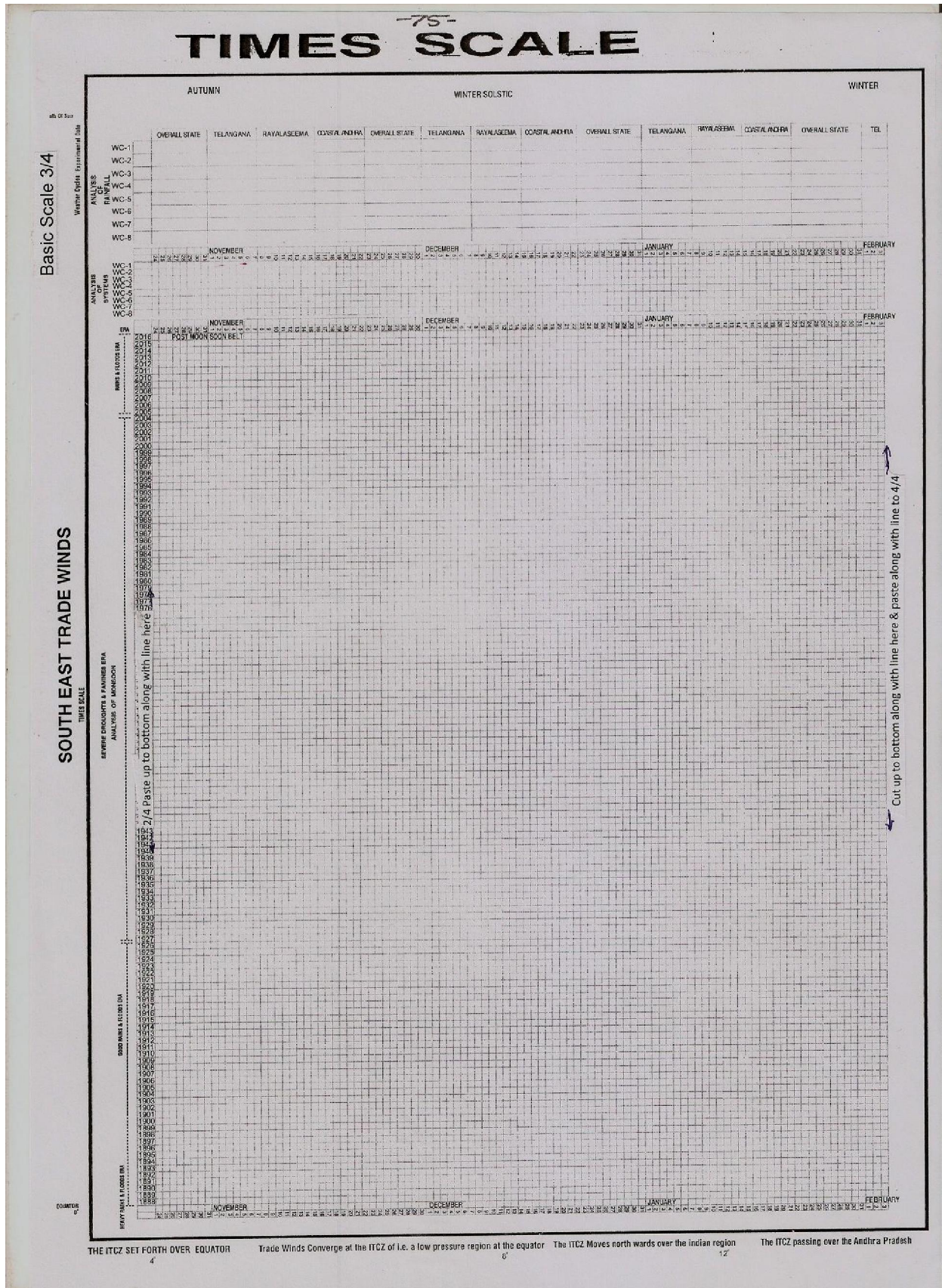


THE ITCZ SET FORTH OVER EQUATOR      Trade Winds Converge at the ITCZ of i.e. a low pressure region at the equator      The ITCZ Moves north wards over the Indian region      The ITCZ passing over the Andhra Pradesh

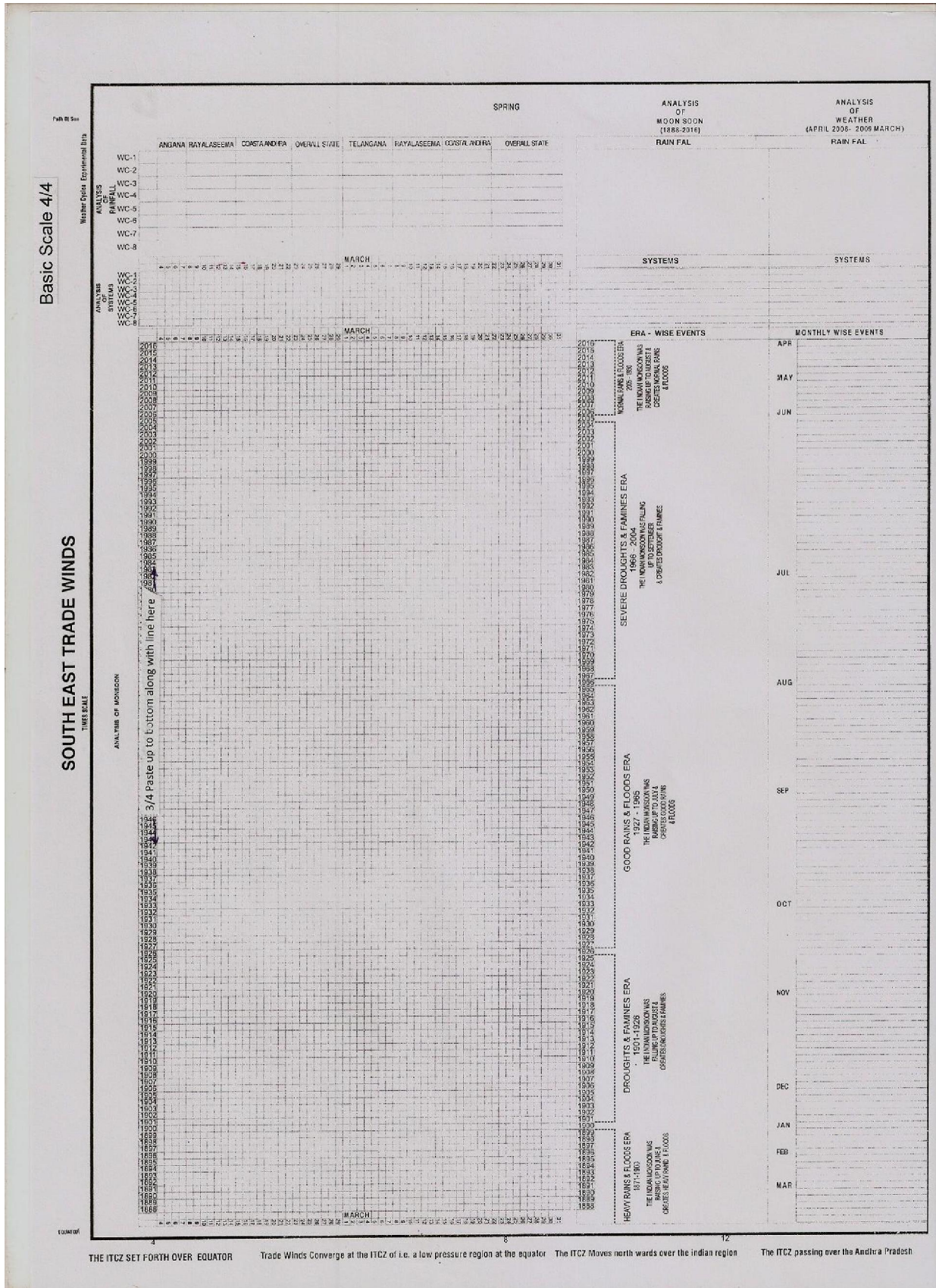








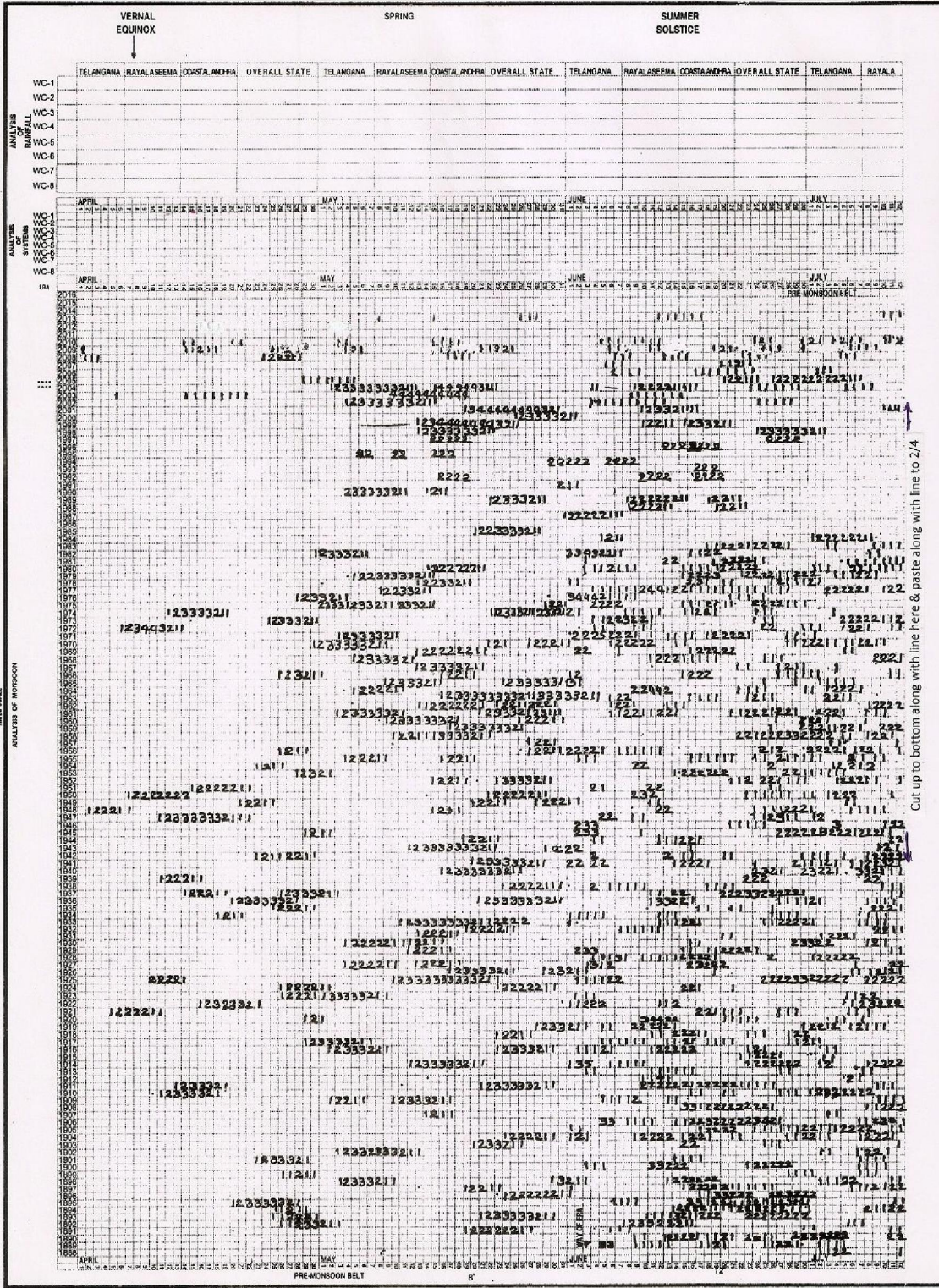






filled Scaled 1/4

SUNWINDS | TRADE WINDS  
THIRD SCALE  
ANALYSIS OF WINDS



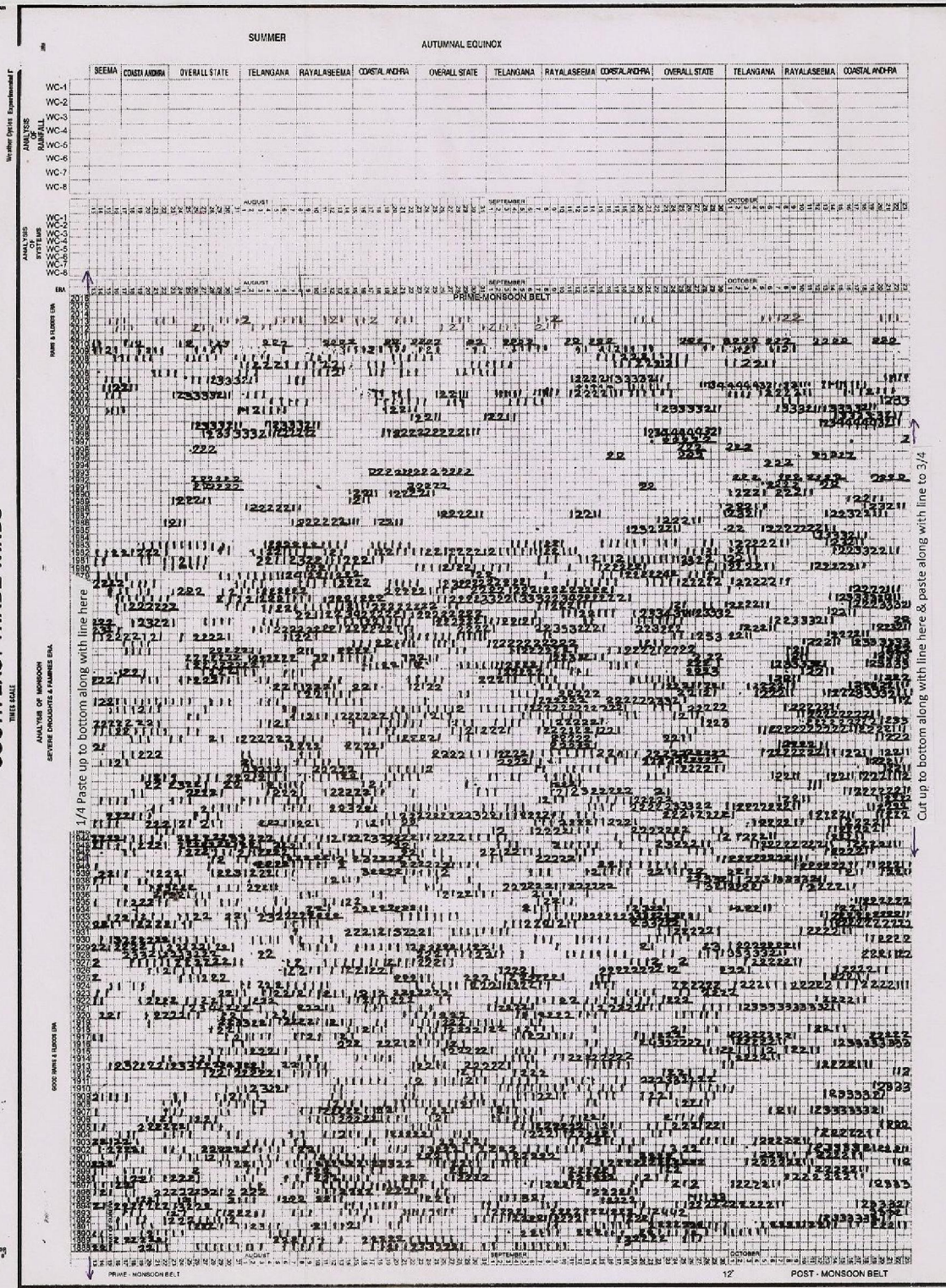
Cut up to bottom along with line here & paste along with line to 2/4

THE ITCZ SET FORTH OVER EQUATOR Trade Winds Converge at the ITCZ i.e. a low pressure region at the equator The ITCZ Moves north wards over the Indian region The ITCZ passing over the Andhra Pradesh



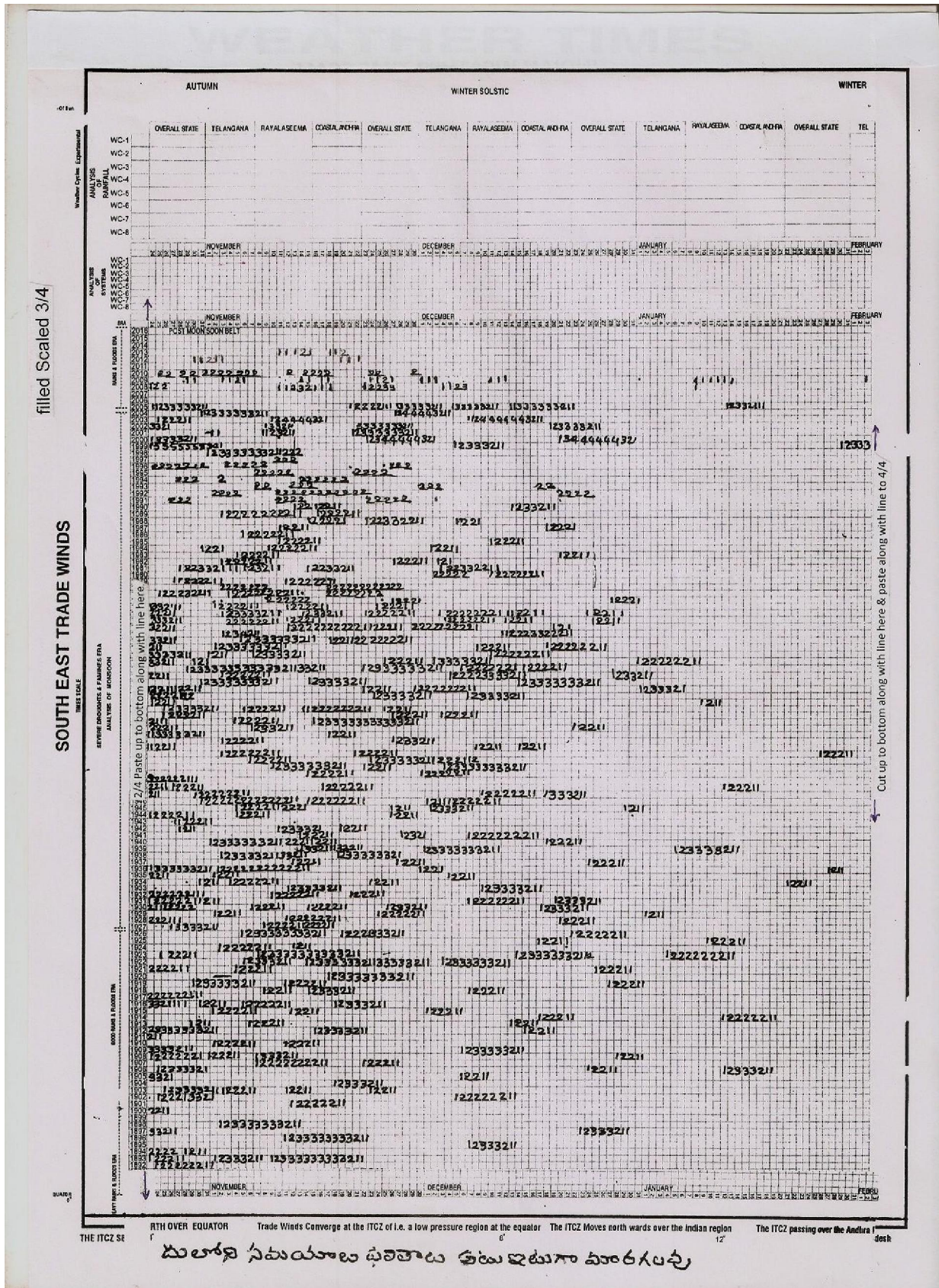
filled Scaled 2/4

SOUTH EAST TRADE WINDS



107 SET FORTH OVER EQUATOR Trade Winds Converge at the ITCZ of i.e. a low pressure region at the equator The ITCZ Moves north wards over the Indian region The ITCZ passing over the Andhra Pradesh



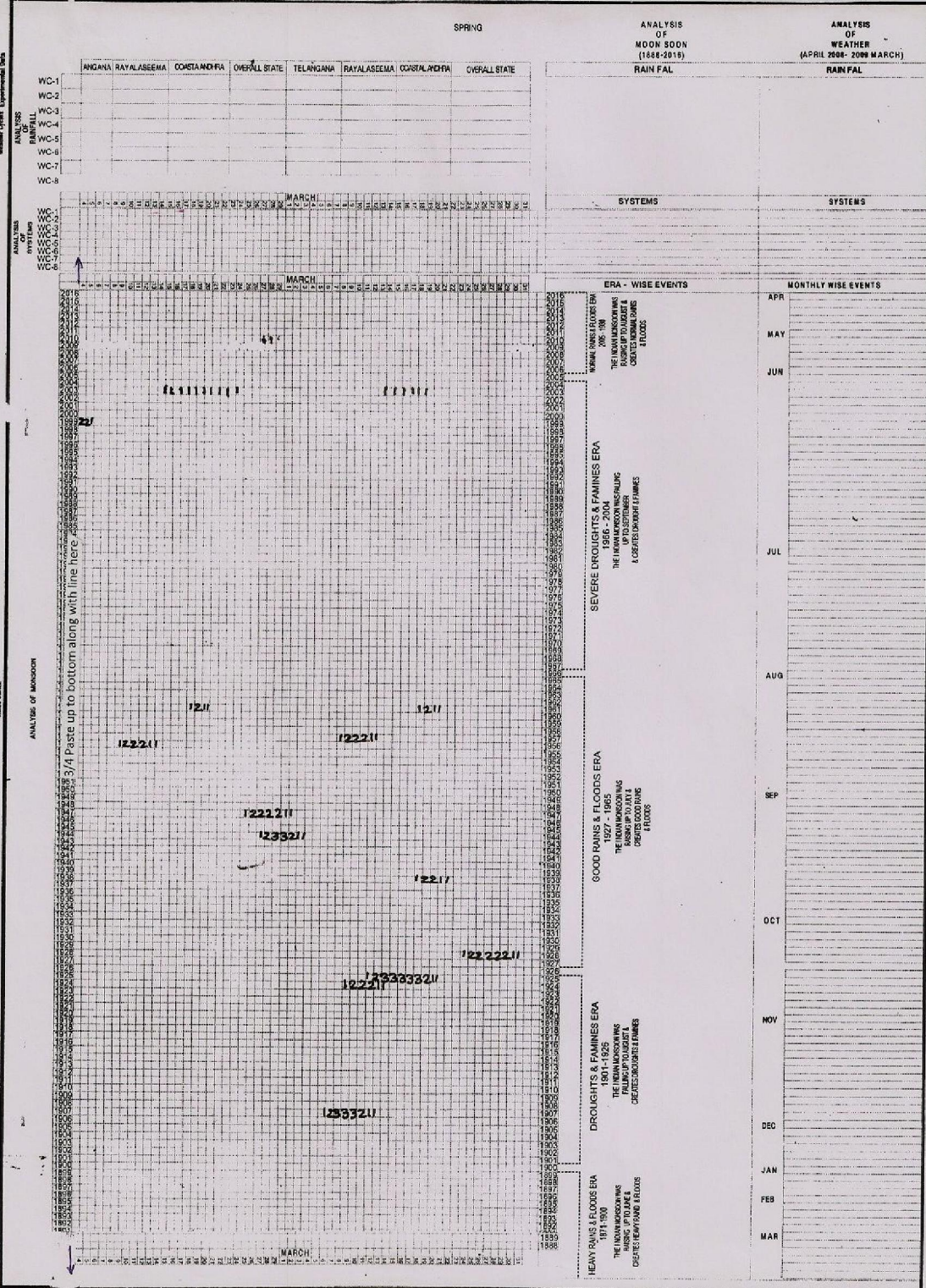


దూరపు సముదాయ ఘటనలు ఉంటే ఇటుగా మారగలవు



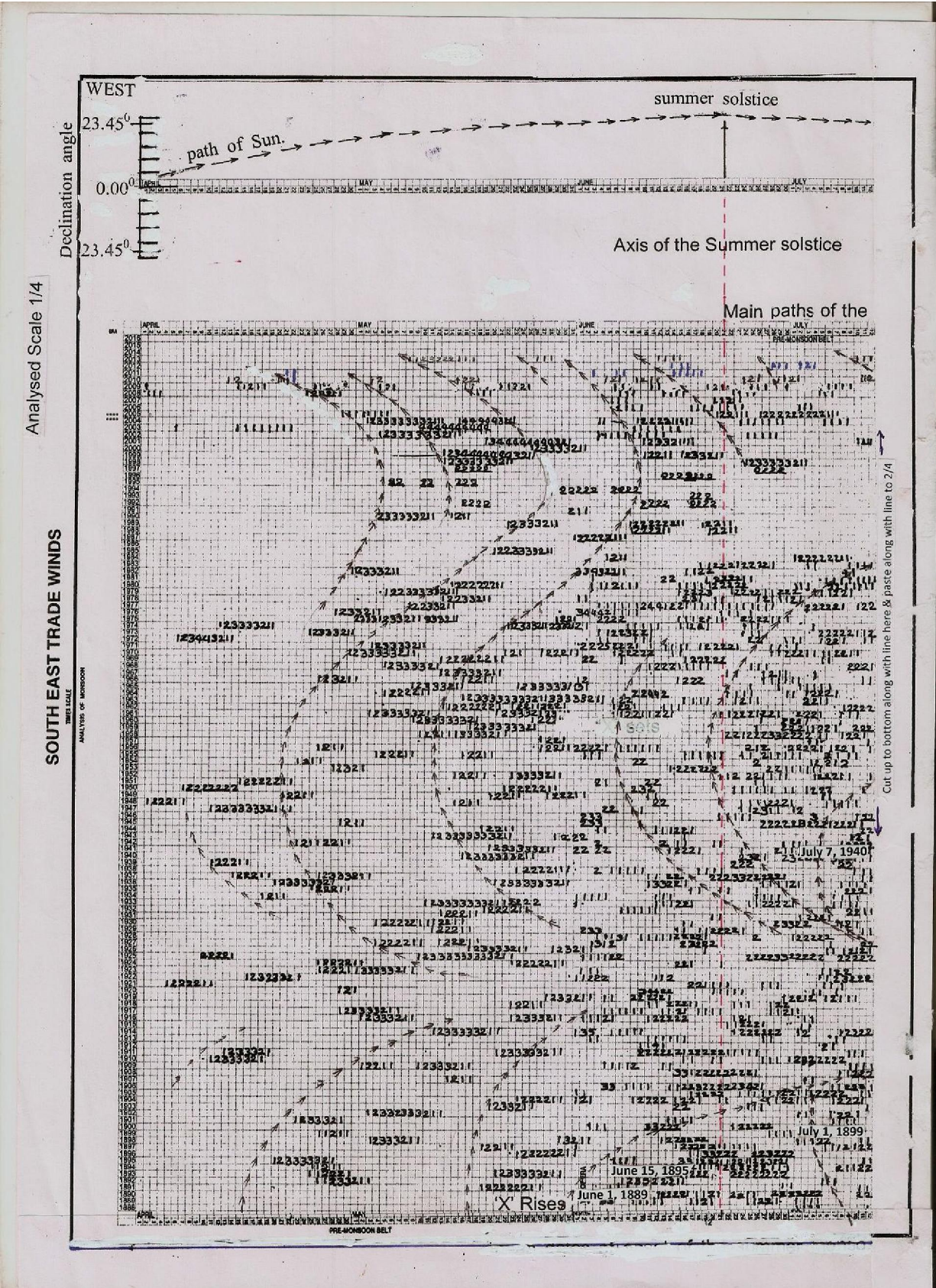
filled Scaled 4/4

**SOUTH EAST TRADE WINDS**  
THREE TRADES



THE ITCZ SEVERE OVER EQUATOR Trade Winds Converge at the ITCZ of i.e. a low pressure region at the equator The ITCZ Moves north wards over the Indian region The ITCZ passing over the Andhra Pradesh





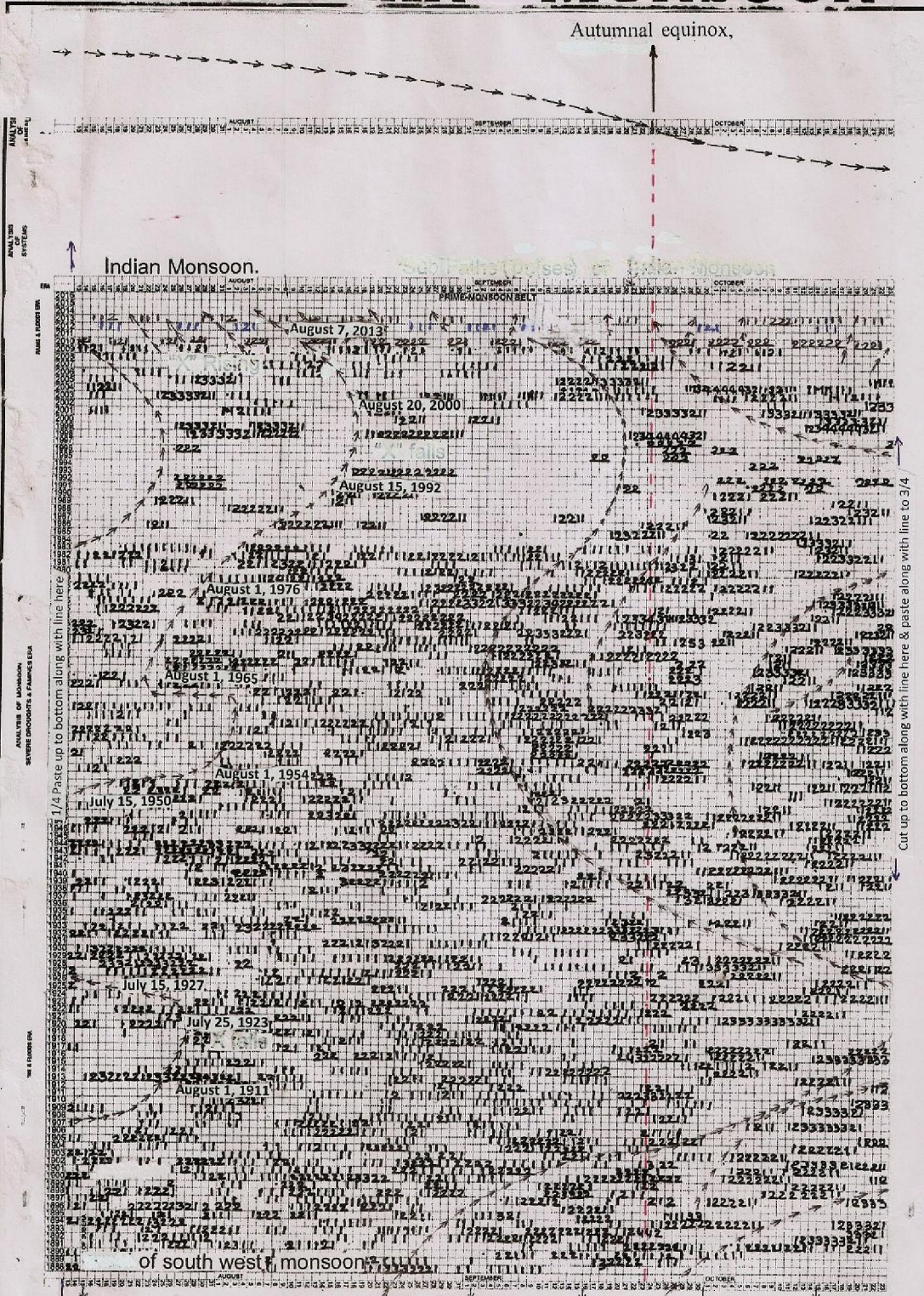


# INDIAN MONSOON

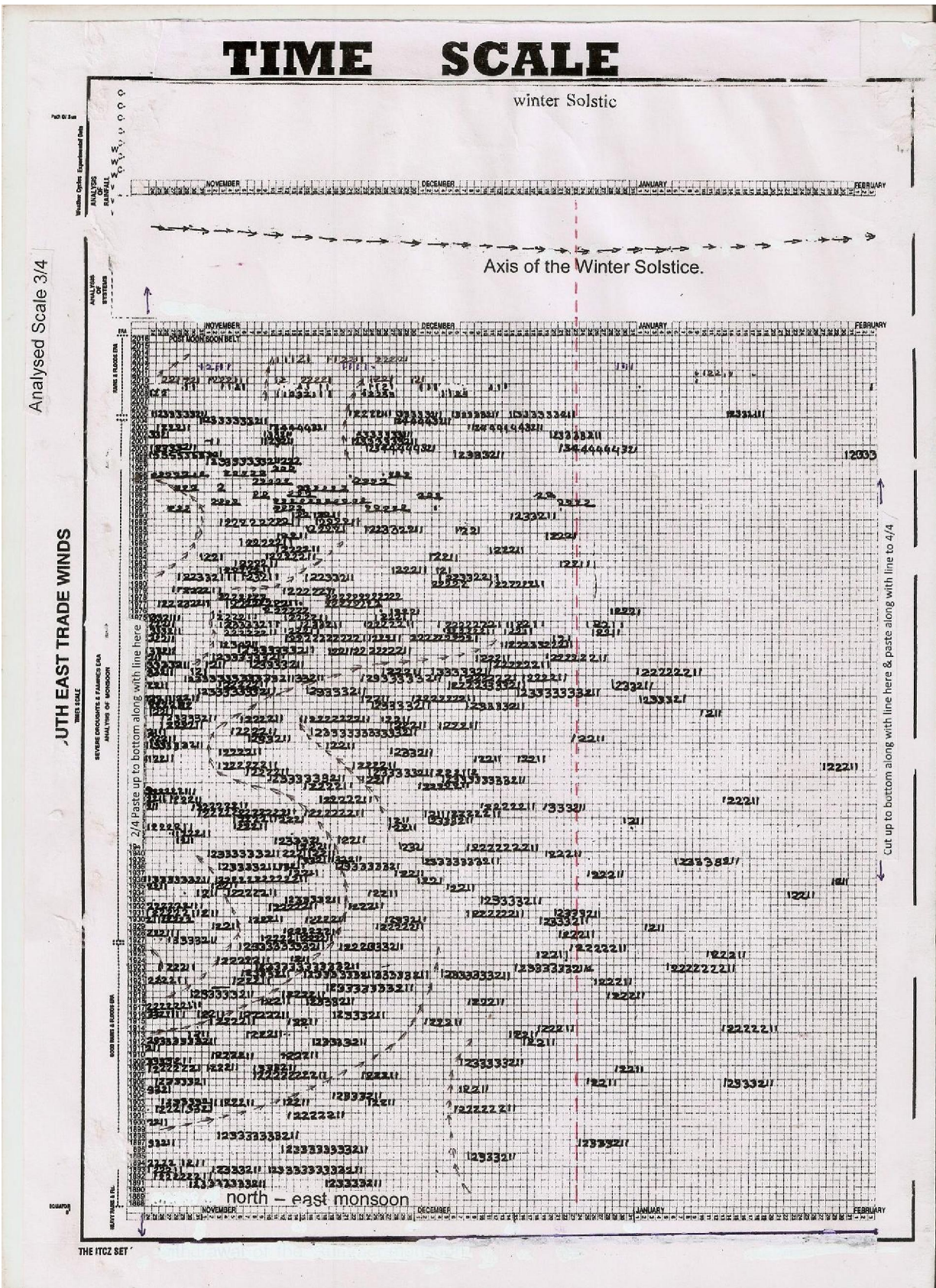
Autumnal equinox,

Analysed Scale 2/4

SOUTH EAST TRADE WINDS



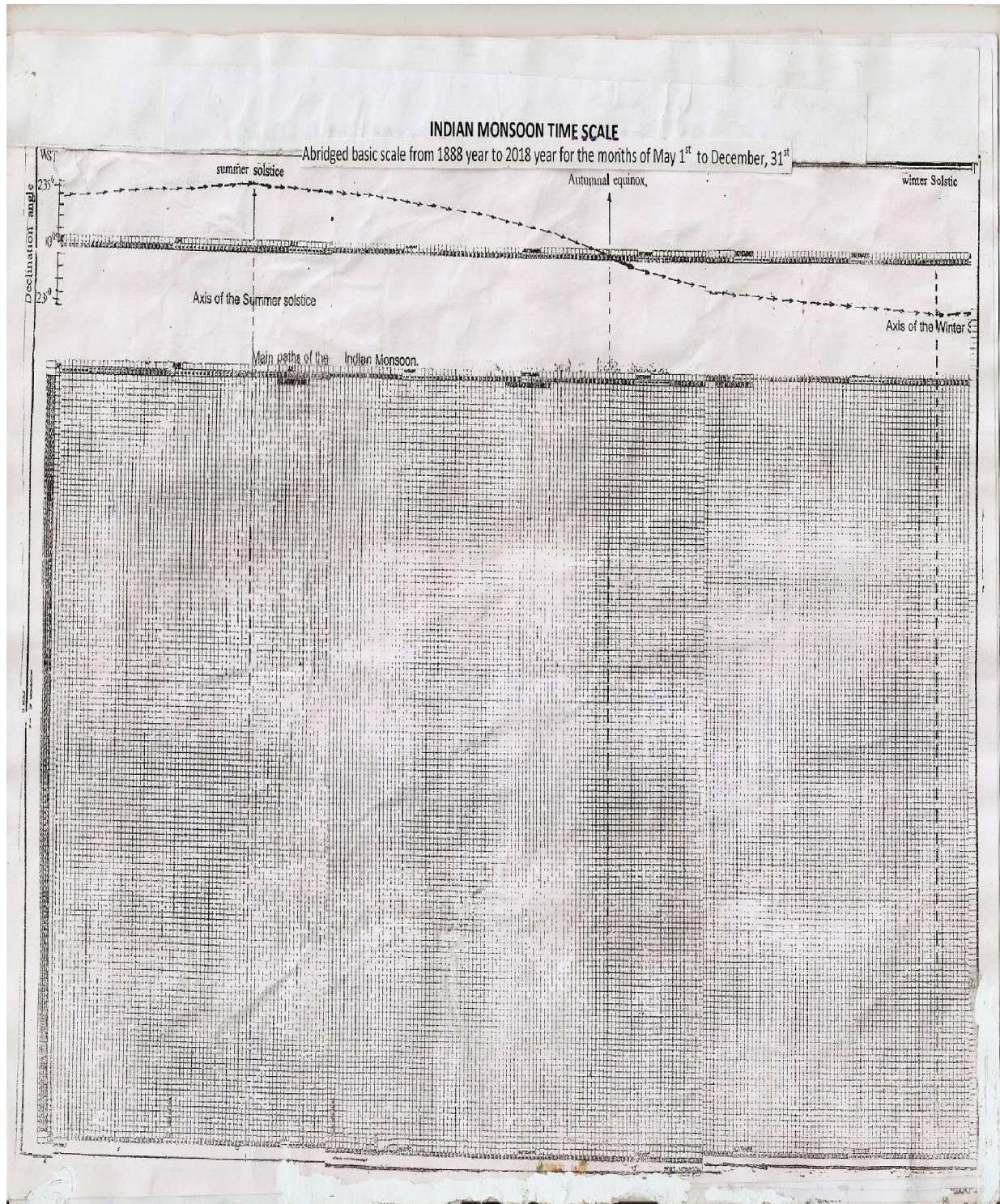




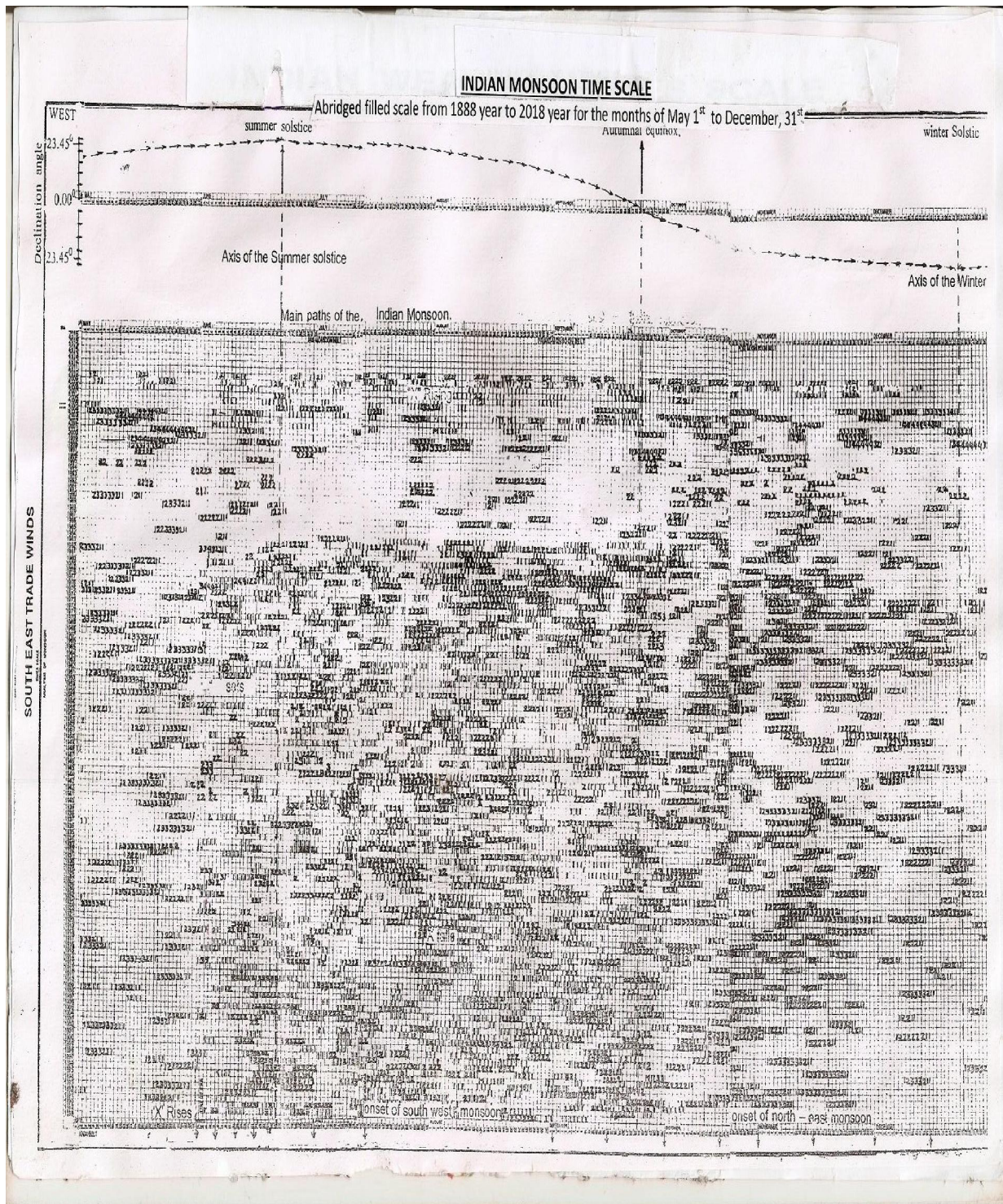




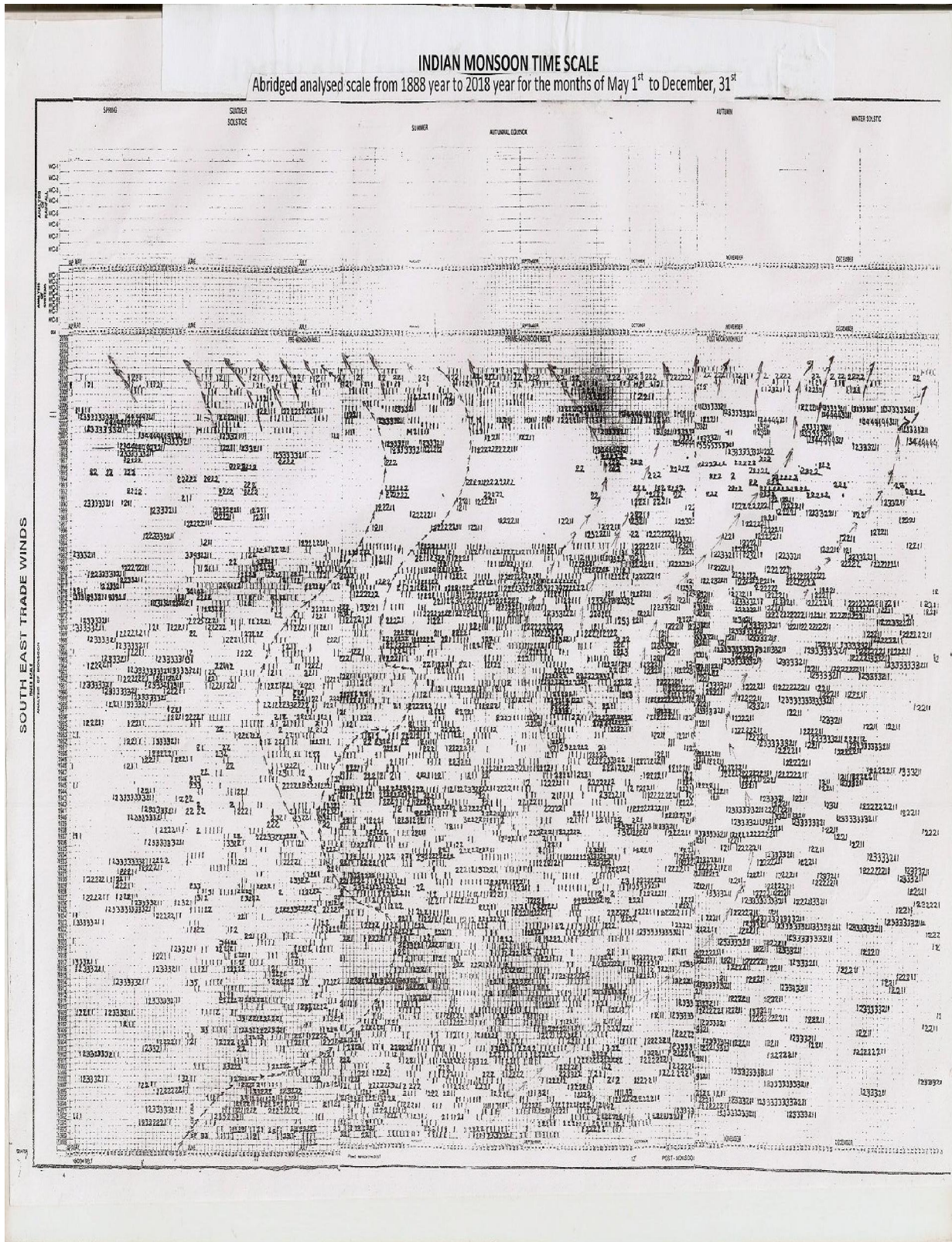








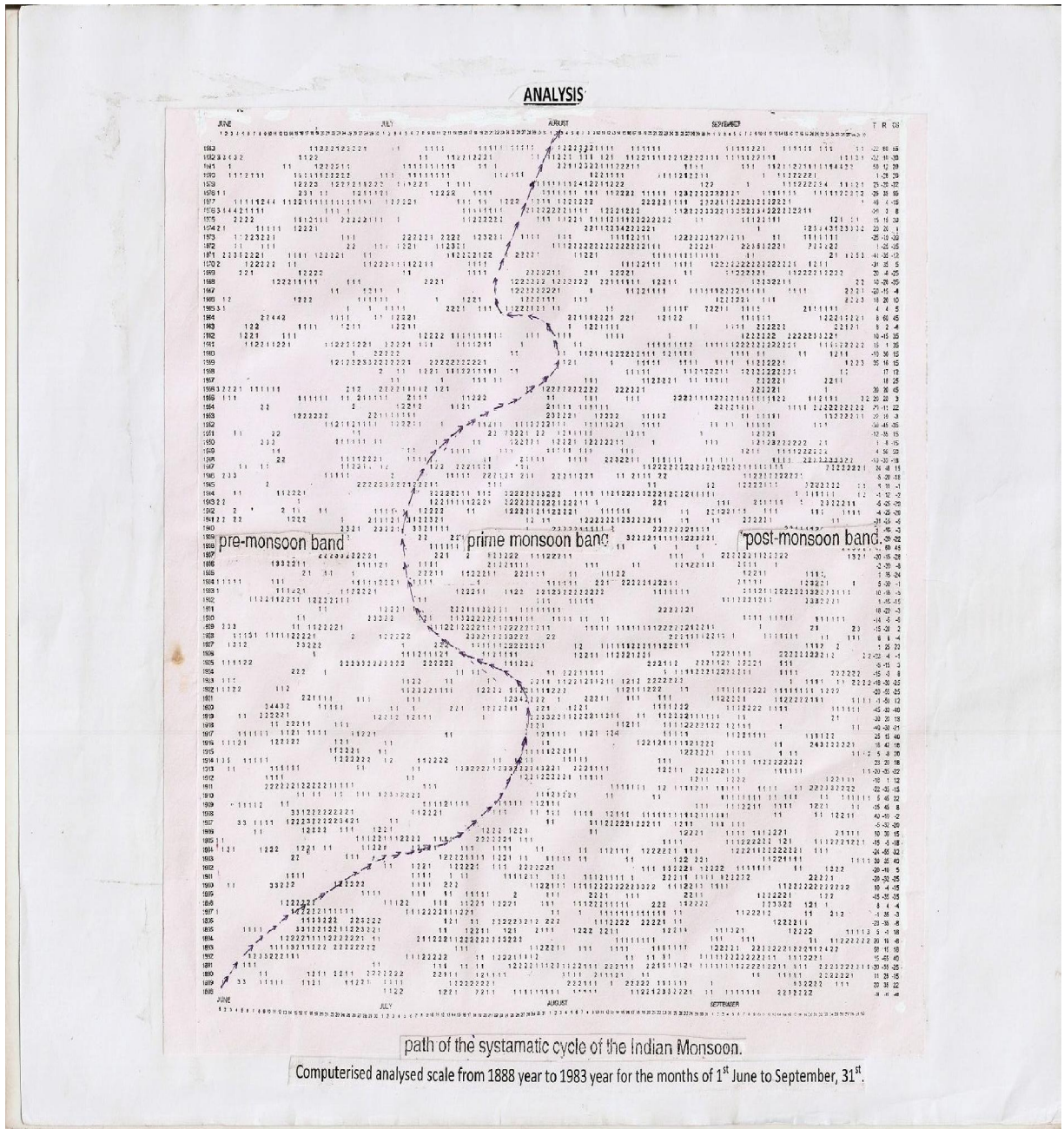












5/18/2016